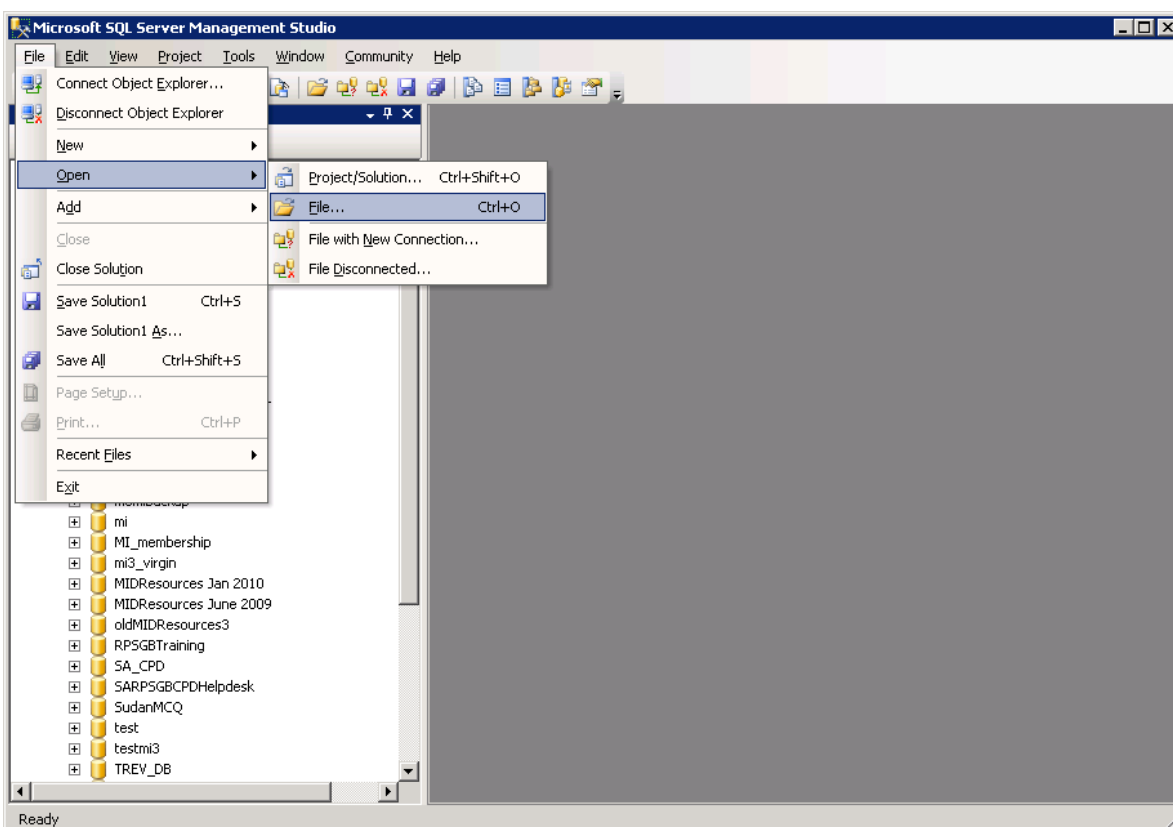


Installing the MiDatabank database on a SQL Server

This walkthrough assumes that two Windows Groups have already been created on Active Directory, or the local SQL Server. In this example the two groups are called MIAdministratorUsers and MIEnquiryManagerUsers. Each of these groups should be populated with the windows users who are permitted to use each of the MiDatabank applications - MIAdministratorUsers should be populated with those people who will be using the MiDatabank Administrator application, and MIEnquiryManagerUsers is for people who will be using the MiDatabank Enquiry Manager application.

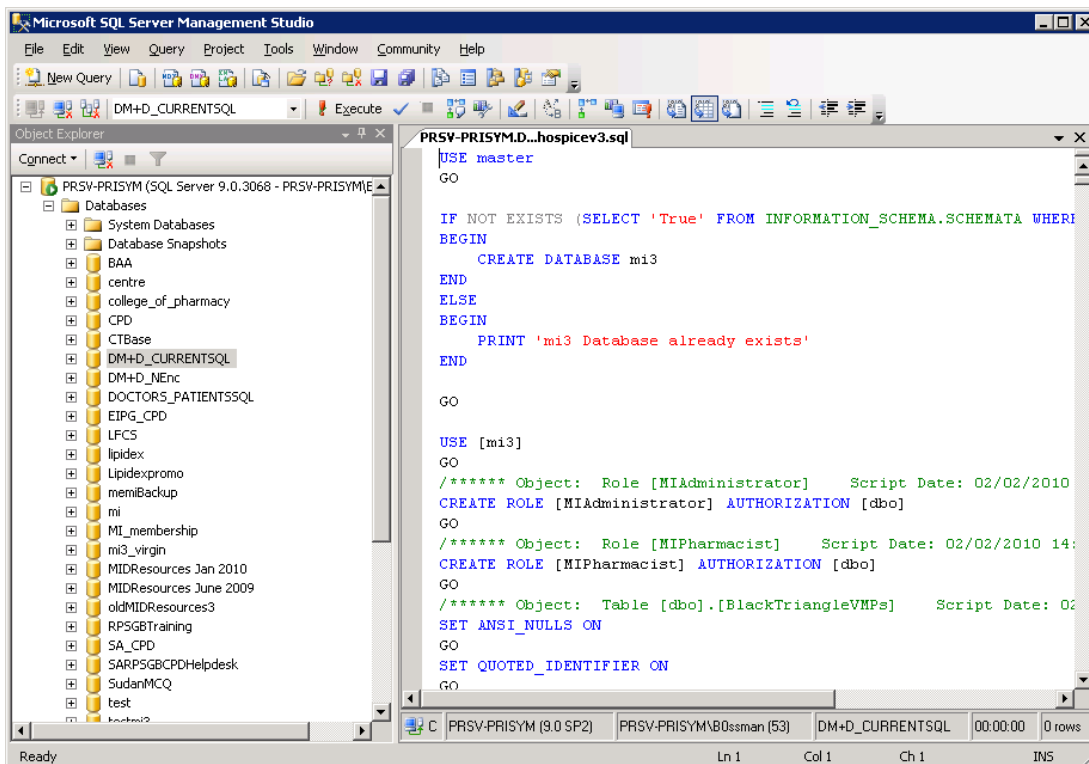
To install the MiDatabank database (mi3)

1. Open Microsoft SQL Server Management Studio
2. Choose File>Open>File...

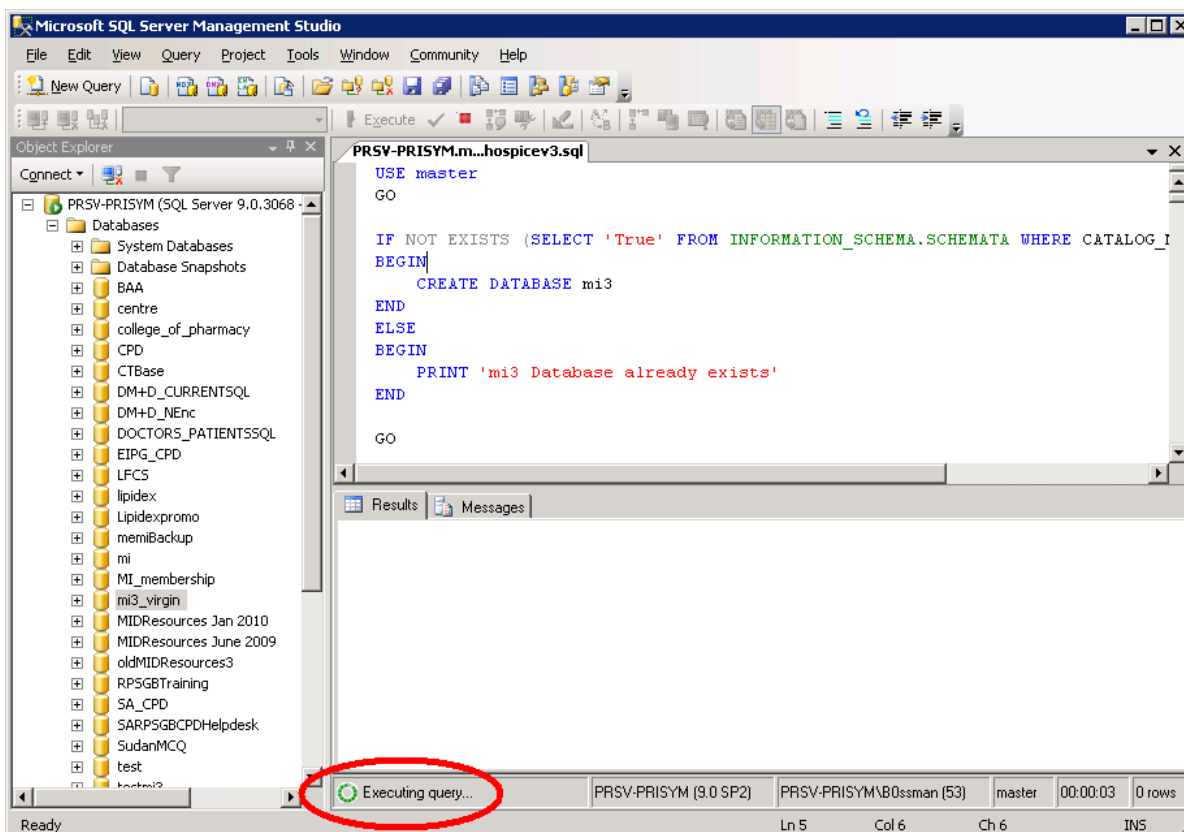


3. Open the sql file sent to you with the installation files.

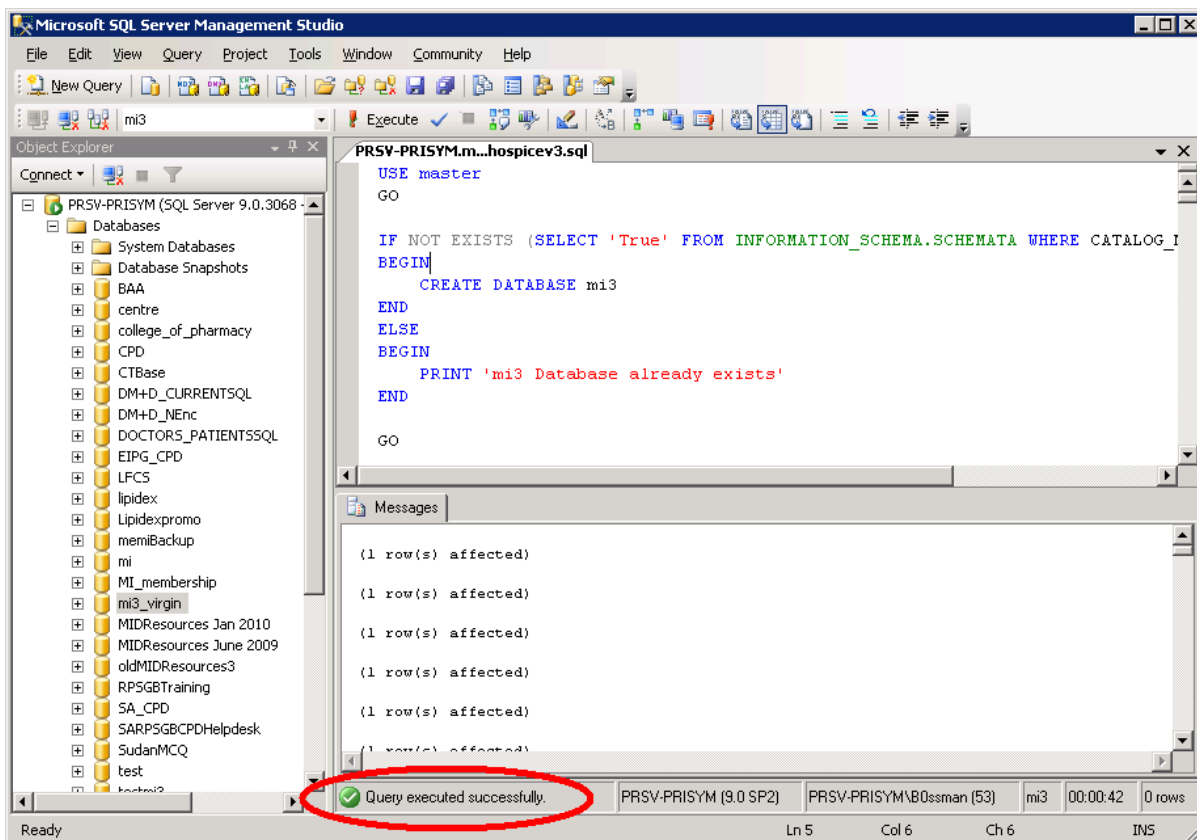
The sql file is displayed in the right hand panel:-



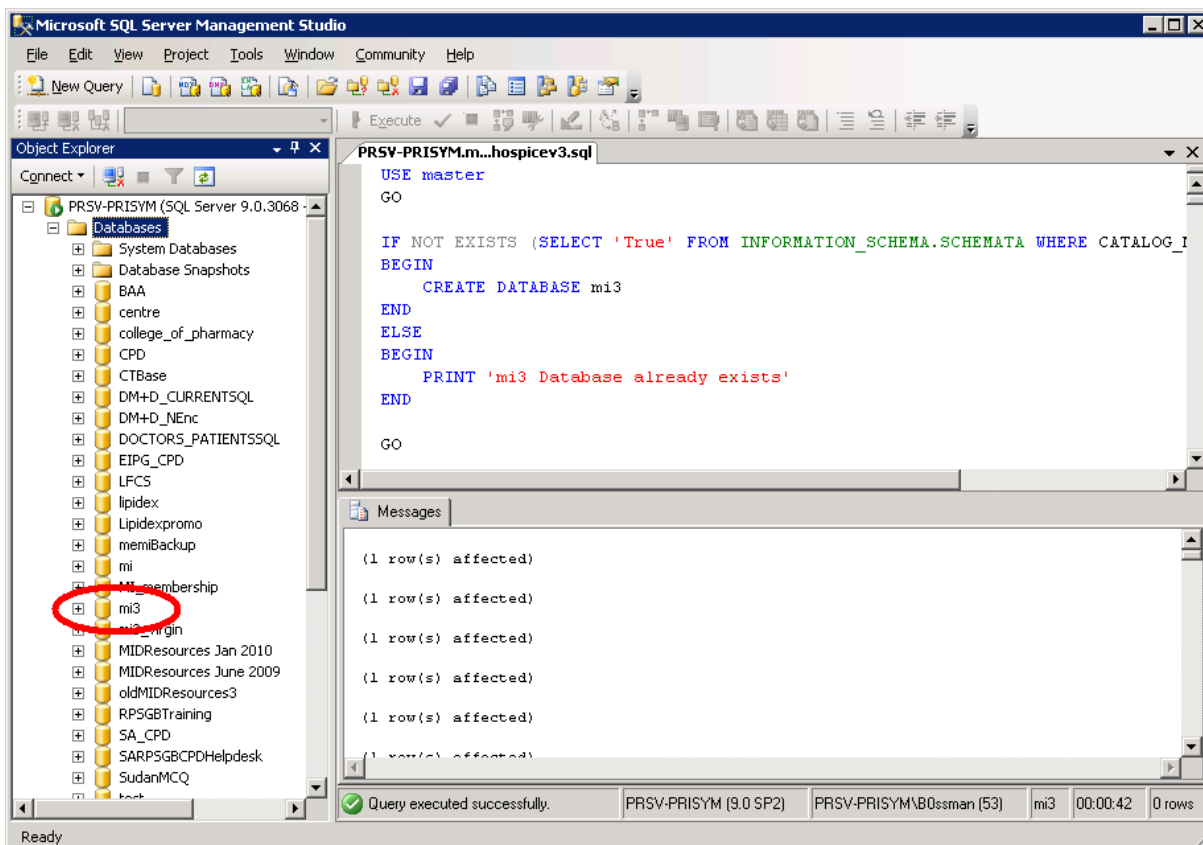
4. Click the Execute button in the toolbar to run the sql file. The 'Executing query' message appears:-



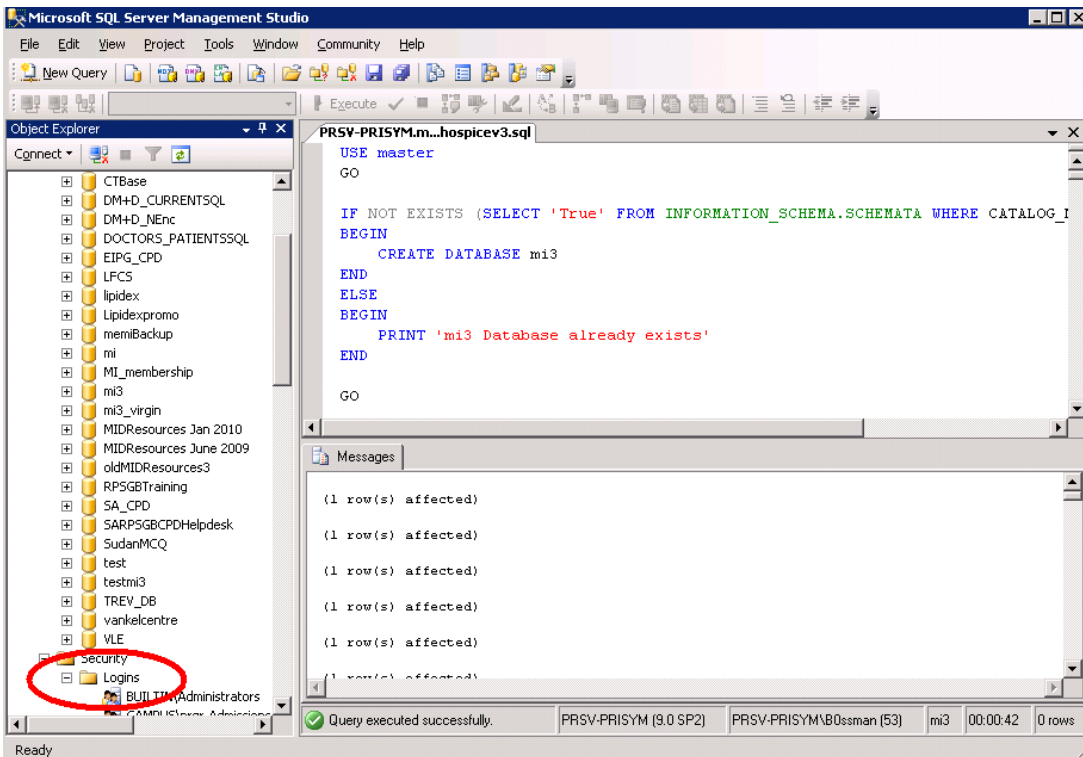
After a minute or so the execution completes:-



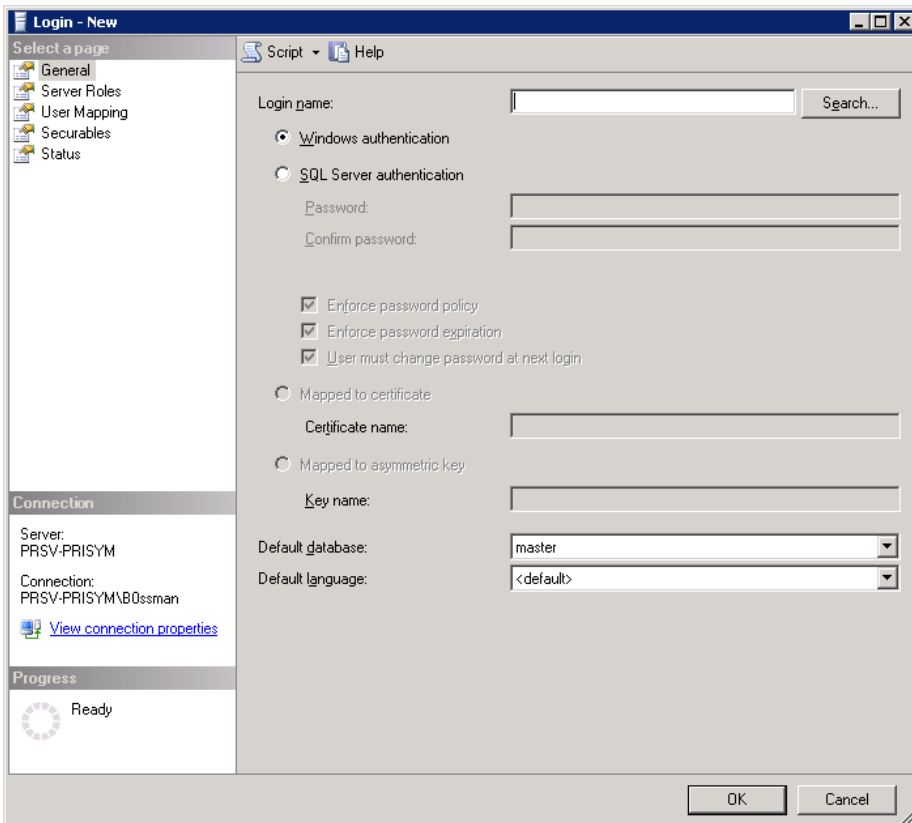
Next, click on the left-hand panel and press F5 to refresh the listing of databases. The database called mi3 should now appear in the listing



4. The next job is to configure the windows users who are allowed to access the mi3 database. Using the listing in the left-hand panel, expand the Security folder to reveal the Logins folder: -

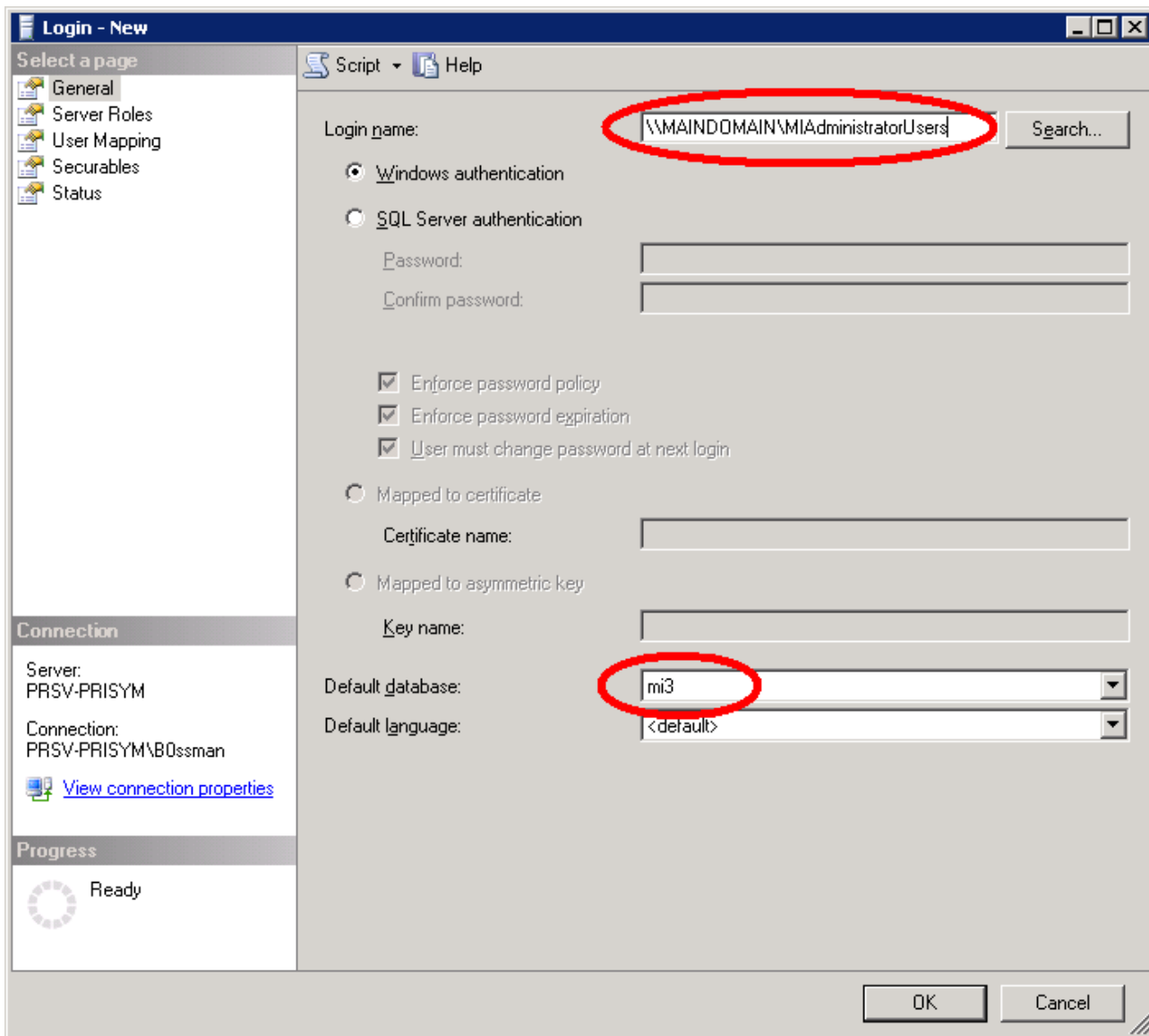


Next, right-click on the Logins folder and choose 'New Login' from the pop-up menu. This displays the following dialog box:-

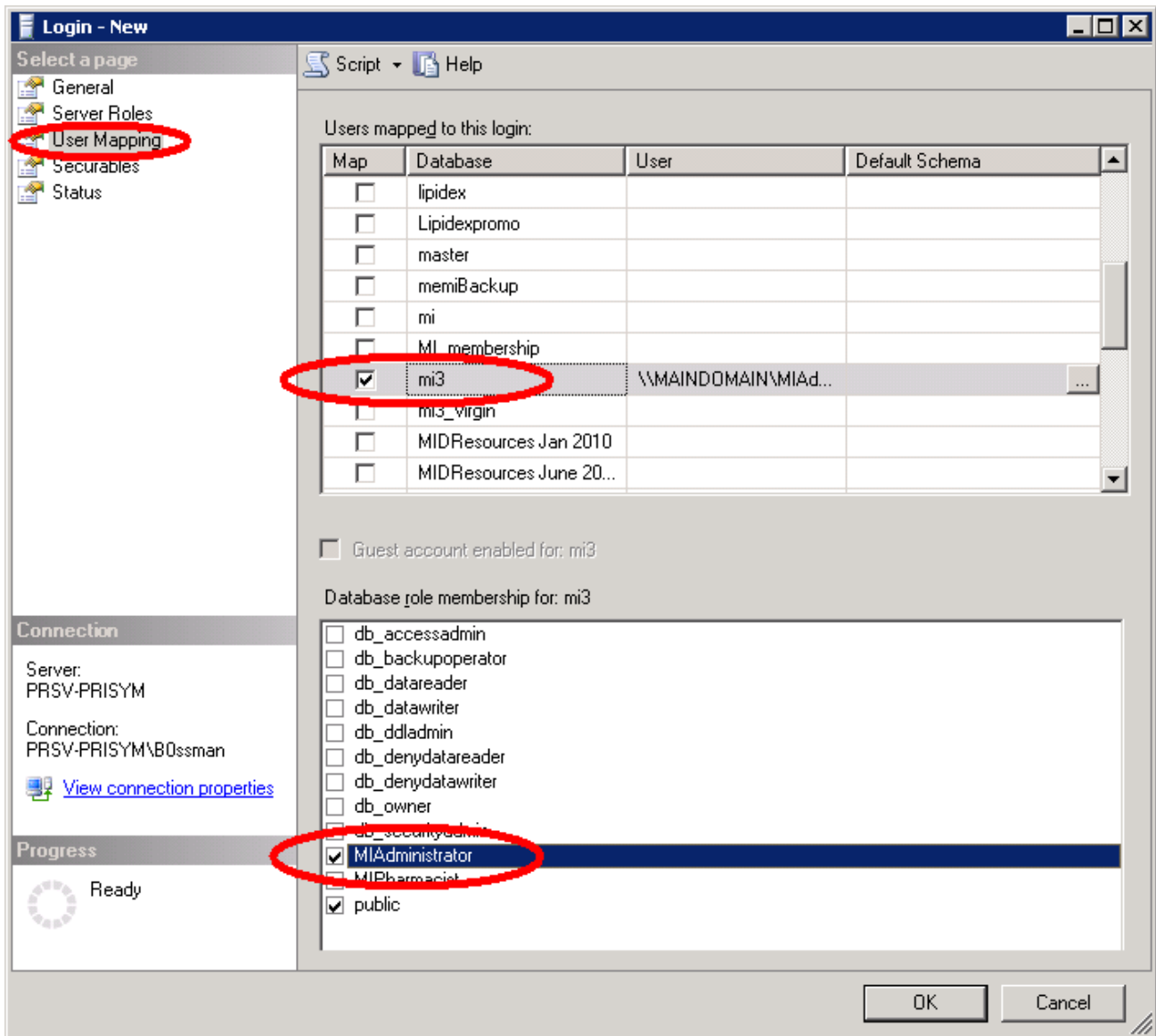


6. Enter the MIAdministratorUsers group as the Login name and change the default database to mi3.

In the example shown below, the MIAdministratorUsers group has previously been created on the Active Directory called MAINDOMAIN: -



Next, click on the 'User Mapping' node in the list on the left-hand side,

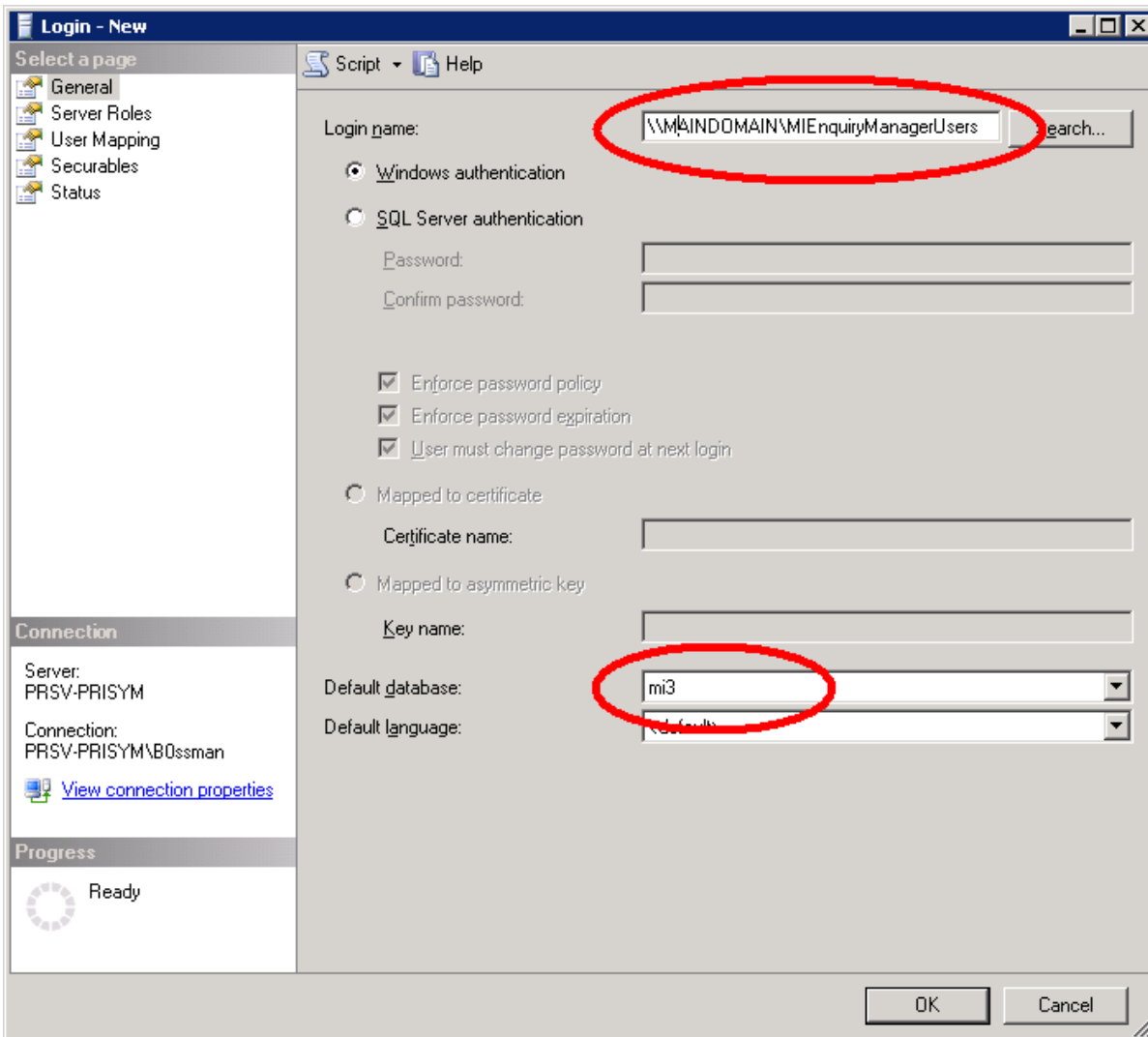


Do the following:-

- check the checkbox called mi3 in the top list on the right-hand side
- check the checkbox for MiAdministrator in the bottom list on the right-hand side
- click the OK button

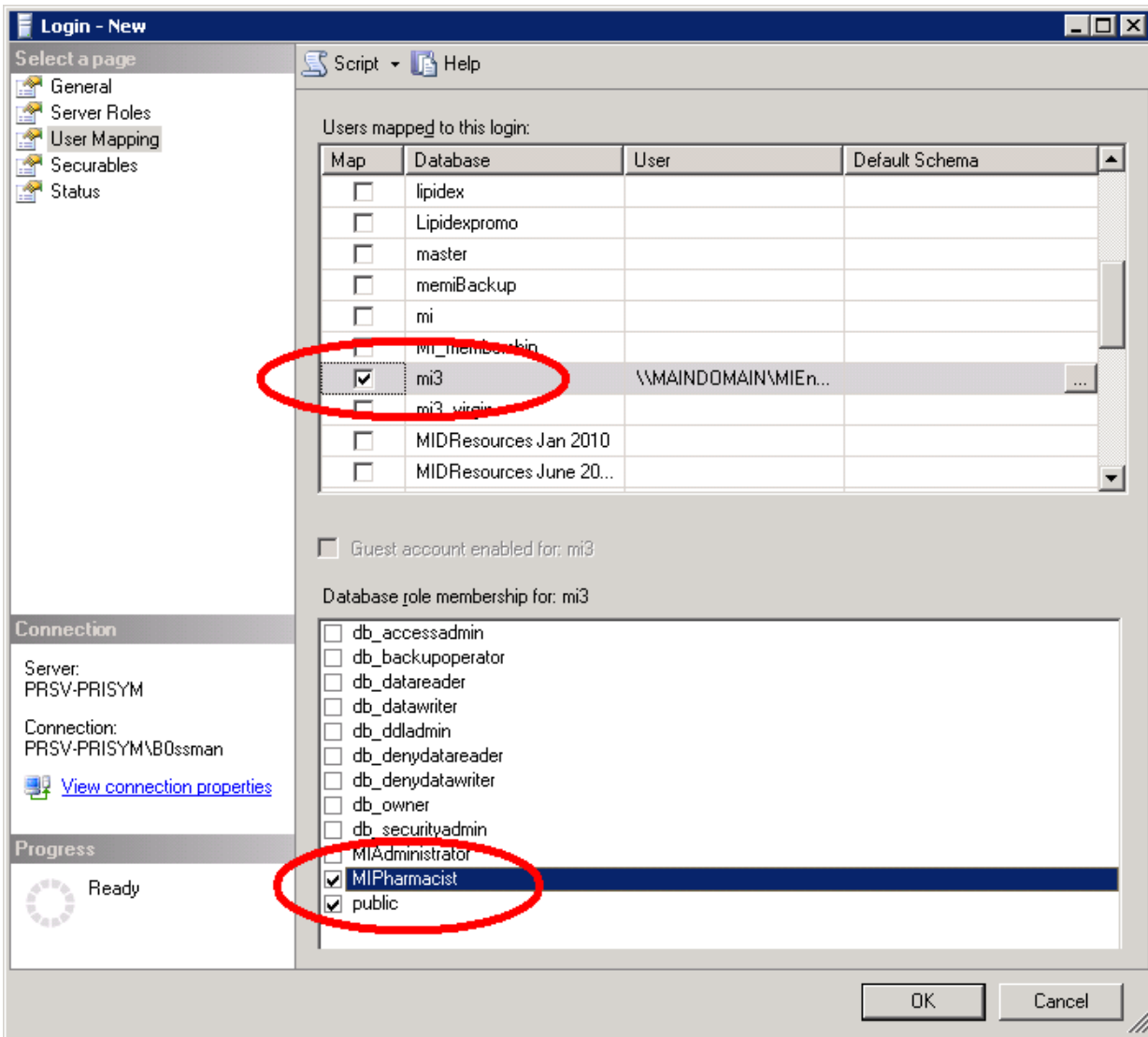
Database access for users of the MiDatabank Administrator application is now complete

7. Right-click on the Logins folder and choose 'New Login' from the pop-up menu. Enter the MIEnquiryManagerUsers group as the Login name and change the default database to mi3. In the example shown below, the MIEnquiryManagerUsers group has previously been created on the Active Directory called MAINDOMAIN: -



Next, click on the 'User Mapping' node in the list on the left-hand side, do the following: -

- check the checkbox called mi3 in the top list on the right-hand side
- check the checkbox for MiPharmacist in the bottom list on the right-hand side
- click the OK button



The installation and configuration of the mi3 database is now complete.

PLEASE NOTE THAT REGULAR BACKUPS OF THE DATABASE SHOULD BE TAKEN. FOR FURTHER INFORMATION REGARDING BACKUPS PLEASE SEE THE BACKUP DOCUMENTATION IN THE HELP TAB.